

Clear Creek Realty



Country Feel and Elegance

511 Tolson Lane

Sheridan, Montana

Residential ♦ Land ♦ Ranch ♦ Recreational

For Sale

✎ Located on the edge of town in a newer subdivision with city services and country views.

✎ Large Master bedroom with spacious bath including a soaking tub & walk-in shower. Two additional bedrooms in 1,801 s.f. that includes a great room, dining room & kitchen.

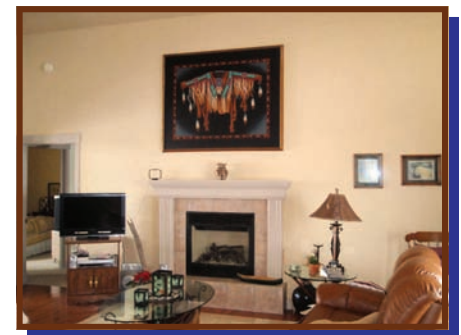
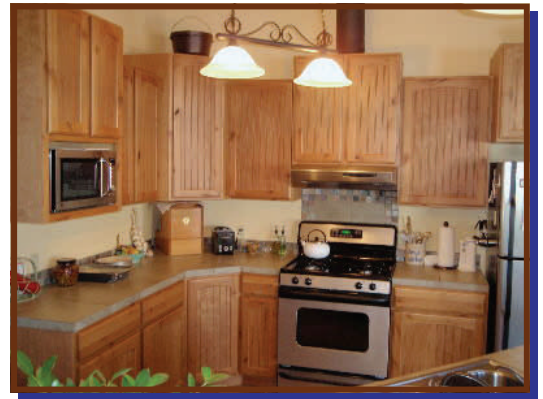
✎ The attached, oversized two car garage and plenty room for storage in addition to the detached storage/shop building with carport.

✎ Build in 2005 with architectural features throughout and quality finish work. Kitchen includes all appliances.

✎ Gas forced air heat & fireplace with great insulation in the home.

✎ 2009 Property taxes - \$2,119.67

Now \$247,500



Contact: Karen Talley

Office ♦ (406) 842-5028

Cell ♦ (406) 596-0123

karen@clearcreekmt.com

www.clearcreekmontana.com